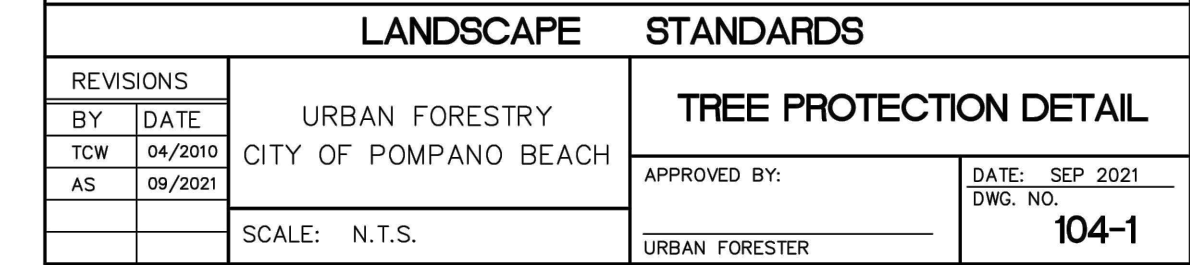
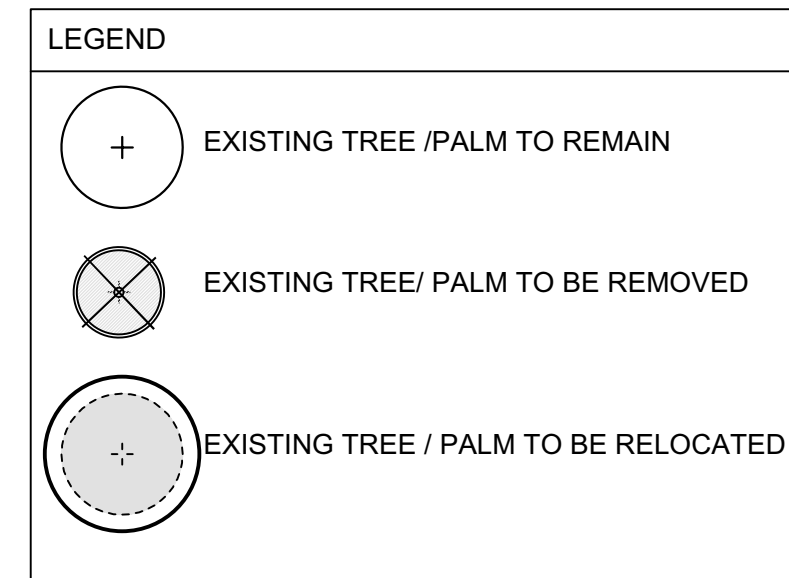


PZ24-1200008  
09/03/2025



NOTE: All height and canopy numbers are in feet. Palm height is overall height

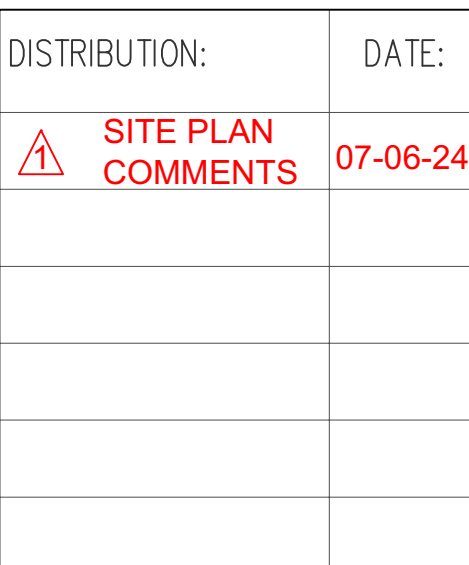
1. Trees must be protected during entire project until completion.

2. \*No tree/palm roots or parts shall be cut or damaged due to construction activities on site. If there are any tree/palm root conflicts, contact Urban Forestry Staff for assistance 954-786-452P

3 non specimen Coconut palms with a diameter of 32" to be removed. The proposed landscape plan has 3 Additional Sabal palms to cover the required mitigation.

1 non specimen tree to be removed with 16" to be mitigated. The proposed landscape plan has 6 additional trees to cover the required mitigation.

Please see tree replacement breakdown below:

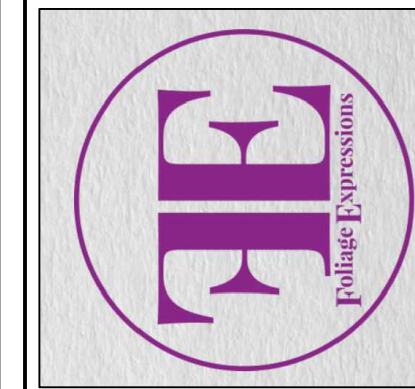


# TREE DISPOSITION PLAN

OR  
I-200

224-12000008  
1/15/2025

**DRC**  
FOLIAGE  
EXPRESSIONS  
PZ24-1400008  
09/08/2008  
8801 SW 192nd Ave  
Culter Bay, FL 3307



Digitally signed by James B. Euell  
Date: 2024.07.29 08:56:29 -0400

NAME & LOCATION:  
**ECO POMPANO TOWNHOMES**

3225 NE 5TH STREET  
POMPANO BEACH FLORIDA 33062

**DRC**

PZ24-12000008  
01/15/2025